

# The Seminary Times

Published by the Office of Communications at Louisville Seminary

September 8, 2017 | Volume 63, No. 6



## Opening Convocation | 164th Academic Year

Louisville Presbyterian Theological Seminary held opening convocation for its 164<sup>th</sup> academic year. Dr. Ashley A. Hicks White spoke on “Toward a Relational Approach to Social Justice.” The 2017-18 entering class was welcomed along with Dr. Jonathan Soyars, visiting professor of New Testament. Four annual awards were presented. See page 2 for details.

Photo by Jonathan Roberts.



Dr. Ashley A. Hicks White

### HOURS OF OPERATION

#### ACADEMIC SUPPORT CENTER

M, T, TH & F  
10 a.m. - 4 p.m.

Wednesday  
CLOSED

Contact  
Beth Herrinton-Hodge  
[bherrintonhodge@lpts.edu](mailto:bherrintonhodge@lpts.edu)  
Sherry Arconti  
[sarconti@lpts.edu](mailto:sarconti@lpts.edu)

#### NEW LEGACY CAFÉ

Monday - Friday  
Breakfast  
8 – 10 a.m.

Lunch  
11 a.m. – 2 p.m.

#### LIBRARY

Monday – Thursday  
8 a.m. – 10 p.m.

Friday  
8 a.m. – 5 p.m.

Saturday  
12 – 5 p.m.

Sunday  
5 – 10 p.m.

## Calendar: September 10 - 15

<b>Sunday, September 10</b>	<b>Field Education Congregational Placements Begin</b>
<b>Monday, September 11</b> 10:30 a.m. 12 noon	<b>Field Education Agency Placements Begin</b> Chapel Ministers Meeting   WORSHIP RESOURCE CENTER Professional Photos   Ralph Homan   119 Nelson Hall
<b>Tuesday, September 12</b> 12:30 p.m.	Wesley Connexion   McAtee A
<b>Wednesday, September 13</b> 11:30 a.m. 12 noon 4 p.m.	Degree Committees/Accreditation   <i>see page 2 for locations</i> Grassroots Meeting   Winn Center Lobby Women at the Well Prayer Group   Caldwell Chapel
<b>Thursday, September 14</b> 11:30 a.m.	Chapel   Brad Wigger Poetry Read
<b>Friday, September 15</b> 11:30 a.m. 1:30 p.m.	Chapel with Cliff Kirkpatrick Committee Meetings   <i>see page 2 for locations</i>

NOTE: A complete list of upcoming KEY DATES is available at [www.lpts.edu](http://www.lpts.edu)  
(Select the “calendar” button on the home page.)

Submit all articles, questions or inquiries to  
Editor Jean Campbell Herp, ext. 360 or [jherp@lpts.edu](mailto:jherp@lpts.edu)

LOUISVILLE SEMINARY

## Fall Convocation Awards 2016

MDiv student Christiaan Faul received the E.L. Bell Memorial Prize for excellence in biblical studies.



**The E.L. Bell Memorial Prize** is awarded to a student in his or her first year who has demonstrated excellence in biblical studies. Established in 1953, the award is presented in memory of Edwin Lewis Bell (1864-1942), a deacon and elder of Old Stone Presbyterian Church in Lewisburg, W.Va., and the father of Margaret Bell Hanna of Lexington, Ky., who was the spouse of Dr. C. Morton Hanna (1896-1964), a Louisville Seminary alum, professor, and pioneer of the supervised field ministry movement.

MDiv student **Jamil Grimes** received the Burton Z Cooper Prize in Theology.



**The Burton Z Cooper Prize in Theology** recognizes the middler student who has demonstrated promise in constructive, philosophical, systematic, or contemporary theology. The prize was established in 1995 in honor of Dr. Burton Z Cooper, professor emeritus of philosophical theology, who taught at Louisville Seminary for 28 years, from 1970 to 1998.

MDiv student **Teresa Pool** received the Dean K. Thompson Prize in Practical Theology.



**The Dean K. Thompson Prize in Practical Theology** honors the eighth president of Louisville Seminary, who served from 2004 to 2010. It is awarded to a middler student who has demonstrated excellence in the study of practical theology and in their congregational field education placement.

MAMFT student **Shelby Oda** received the James A. Hyde Marriage and Family and Pastoral Counseling Theory & Practice Award.



**The James A. Hyde Marriage and Family and Pastoral Counseling Theory & Practice Award** was established in 2009 to honor Dr. James A. Hyde, who directed the Marriage and Family Therapy Program at Louisville Seminary from 2003 to 2007. The award recognizes a second-year student in the MAMFT program who has demonstrated excellence in marriage and family therapy and pastoral counseling theory and practice during his or her first full year of involvement in the MAMFT clinical and academic program.

## Field Education Info

**Students in Field Education for A/Y 2017-2018-Paperwork**  
Students placed in church placements for 2017-2018 must register in the Field Ed office (SH104) for their Field Education experience. The **Field Education registration form** is online in the Field Ed section of the seminary's website. Please note that we require two (2) forms, both with original signatures. In addition, a **sexual misconduct form** must also be submitted to the Field Ed office. It is online with the Field Ed registration form.

### CPE Application Training

On Monday, September 25, the Field Ed Office will host a meeting on properly completing a CPE application. Students planning to do a basic unit of CPE, especially during summer 2018, should attend this meeting. Applications for summer 2018 CPE will be due before/by Thursday, November 2.

We will meet in Schlegel 122 and begin promptly at 12:15. It is important to contact the Field Ed office, SH104, or email Fran ([fschnuerle@lpts.edu](mailto:fschnuerle@lpts.edu)) if you plan to attend. This will allow us to have enough materials for everyone.

### Field Ed Time Sheets

Time sheets are **due on Wednesday, September 13, by 1 p.m.**

### Future Field Ed Dates To Note

Sunday, Sept. 10	Congregational placements begin
Monday, Sept. 11	Agency placements begin
Tuesday, Sept. 19	Lay Committee Training
Wednesday, Sept. 20	Congregational Supervisor's Lunch
Thursday, Sept. 21	Fall Administrative Agreements and Learning Covenants due
Monday, Sept. 25	CPE Application Process Training

## Next Week in Chapel

Thursday, September 14 | 11:30 a.m.

**Brad Wigger** Poetry Read

**"We are Living in a Poem."** Bring your own poetry or a poem that has touched you.

Friday, September 15 | 11:30 a.m.

**Cliff Kirkpatrick** Worship Service with Communion

**"A Different World is Possible."** This service is about the dramatic resurgence of violence, hatred, racism, and destruction of our environment and the response from the people of God with compassion and faithfulness.

## Meeting Locations

### Degree Committees/Accreditation Meetings Wednesday, September 13

DMin	220 Schlegel Hall
MDiv	118 Nelson Hall
MAR	Nelson Hall Board Room

### Committee Meetings Friday, September 15

Academic Affairs	213 Gardencourt
Community Affairs	Nelson Hall Board Room
Cultural Diversity	206 Gardencourt
Christian Life	Worship Resource Center
Gender and Ministry	Women's Center

## Women at the Well

### Women at the Well Prayer and Bible Study 4:00 p.m. to 5:00 p.m.

**Prayer:** Caldwell Chapel — 2<sup>nd</sup> Wednesday

**Bible Study:** Winn Center McAtee B — 4<sup>th</sup> Wednesday

*<sup>22</sup> But the fruit of the Spirit is love, joy, peace, forbearance, kindness, goodness, faithfulness, <sup>23</sup> gentleness and self-control. Against such things there is no law.*

Galatians 5:22-23 NIV

Each prayer will center on the Fruit of the Spirit for that month.

Each Bible study will emphasize scripture reflective of the Fruit of the Spirit for that month.

### Goodness

**Prayer:** September 13<sup>th</sup>

**Bible Study:** September 27<sup>th</sup>

### Joy

**Prayer:** October 11<sup>th</sup>

**Bible Study:** October 25<sup>th</sup>



## *A Message from Our Student Body President*

**Brittany Hesson**

### **And we're off!**

I write this at the start of my final year here at LPTS and, fingers crossed, my last year of academics for at least a few years. When I started here 2 years ago, I could have never foreseen how this institution would change me for the better. Looking at our new first-year students, I am both excited and nervous to welcome everyone fully into this community and be shaped by the newness of their presence. Each year, change happens in our small world here and in our big world everywhere that affect our daily lives as students, faculty, staff, and human persons. Let's take these changes in stride and continue do great things in our community. Let's show one another kindness and support. My wish for everyone is abounding grace, never-ending patience, and a spirit of cooperation (maybe also some refreshing afternoon naps!). May we all find the energy and enthusiasm to thrive in the midst of our life together. Welcome back to the school year, Louisville Seminary! Let's do this!



### *Grassroots*

All are invited to join Grassroots for the first meeting of the year.

**Wednesday, September 13**  
**12 p.m.**  
**Winn Center Lobby**

Contact [Brittany Hesson](#) with any questions, ideas, or concerns.

### *Recycling Volunteers*

The following people have volunteered to maintain recycling bins around campus for this year. Please help them out by following the appropriate recycling guidelines posted in each recycling area.

Caldwell Chapel  
Counseling Center  
Gardencourt  
Library  
Nelson  
Schlegel  
Tri-C  
Winn Center

Avery Smith & Jennifer Van Beek  
Ervin Desaussure  
Christiaan Faul  
Heather McIntyre & Brittany Hesson  
Daniel Van Beek & Andy Thomas  
Sandra Monroe & Kari Godwin  
Shelby Oda  
Courtney Bowen & Jenny Hockenberry

## *2017-2018 Student Body Representatives*



Christiaan Faul  
Clerk



Leslie Cashion



Doris Evans



Ronald Gregory



Gina Meester



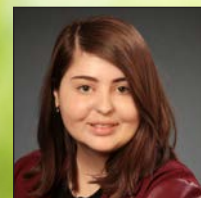
Dana Seay



Alex Sprague



Kate Trigger Duffert



Zoë Wright

# Academic Support Center

## Welcome to a new academic year!

We're looking forward to catching up with old friends and making new ones as we work with students in the year ahead.

Remember:

- ✓ We work with students on a variety of tasks: pre-writing and planning, reading, critical analysis, note-taking, test-taking skills, study skills, ordination exams, and the list goes on.
- ✓ All good writers realize writing is a process, beginning with a draft and then proceeding through several revisions before the "final" draft.
- ✓ We are here to help writers of any skill level work through their processes.
- ✓ We will also help you in the prewriting stages of brainstorming and organization.
- ✓ We help you, not do the work for you.
- ✓ Although we do work with non-native speakers of English, the Center is for everyone because "theologize" is a foreign language for many of us.
- ✓ We're open weekdays from 10 a.m. – 4 p.m., EXCEPT Wednesdays.
- ✓ Sherry is here on Monday and Thursday from 3:30 – 8 p.m. and is very skilled in working with students.
- ✓ You may make an appointment if you wish, but drop-ins are certainly welcome.
- ✓ We're nice. And we share snacks!

Need Help? Just **ASC**.



Beth [bherrintonhodge@lpts.edu](mailto:bherrintonhodge@lpts.edu)  
Sherry [sarconti@lpts.edu](mailto:sarconti@lpts.edu)  
Appointments: [calendly.com/bherrintonhodge](https://calendly.com/bherrintonhodge)

# Student Food Pantry Fall Ingathering

The 2017 Fall Food Ingathering begins now and runs through the end of September. It's important to fill the pantry this month as students are coming back to campus and beginning classes. Employees, students and their families are invited to drop off donations of non-perishable food and personal items in the Winn Center.

The box will be placed beside the "Bread Table". If you should come on a Thursday to partake of the free bread we receive, please drop off a canned good or other food item.

The following items are most popular and needed.



Spam  
Ramen  
Coffee  
Crackers  
Cookies  
Oatmeal  
Canned/bagged beans of all kinds  
Canned vegetables  
Canned tuna and/or chicken  
Canned or packaged fruit  
Cereals of all kinds  
Macaroni and cheese  
Peanut butter  
Cake mixes  
Dried fruits, seeds, nuts  
Fruit juices  
Powdered/canned milk  
Beef stew  
Tomato products  
Soups of all kinds  
Toilet paper  
Pantry supplies: oil, flour, sugar, etc  
Ketchup, condiments  
Paper goods  
Pop tarts, granola bars

## Seminary Choir Information

You are invited to be a part of the Seminary Choir this year. Rehearsals are on Tuesdays from 11:30 a.m. to 12:30 p.m. **and begin Tuesday, September 12.** No auditions necessary. Lessons and Carols will be held on Friday, December 8. The choir is a big part of that service. If you have questions, please email me at [louie@chbcky.org](mailto:louie@chbcky.org) or call me at 502.727.7375.

*Blessings,  
Louie Bailey,  
Seminary Choir Director  
and  
Organist*





# Presbyterian Connection Retreat | 9/16/17

## Ready to Serve

(Luke 1:38)

### Annual Retreat for **Presbyterian Students**

Saturday, September 16, 2017

9 am – 2:20 pm

Springdale Presbyterian Church

7812 Brownsboro Road

Louisville, KY 40241

Join us for a day retreat...

- exploring our calls through Mary's call as recorded in Luke 1
- building communities of discernment and care
- equipping ourselves to bear Christ to the world

#### **Proposed** Tentative MKP CPM/LPTS Presbyterian Connection Retreat Schedule

9:00-9:15 Gathering and refreshments

9:15-9:35 Welcome and ice breakers

9:30-10:05 Worship

10:05-10:15 Break

Workshop topics: Tubb – Denominational Resources to Manage Student/Seminary Debt

Bartel – Ordination Exams – What? When? Where? Why? How?

Odom – MIFs, PIFs, CLC: Call search basics in the PC(USA)

10:15-10:55 Workshop Session 1 (Bartel)

11:00-11:40 Workshop Session 2 (Tubb)

11:45-12:25 Workshop Session 3 (Odom)

12:30-1:15 Lunch

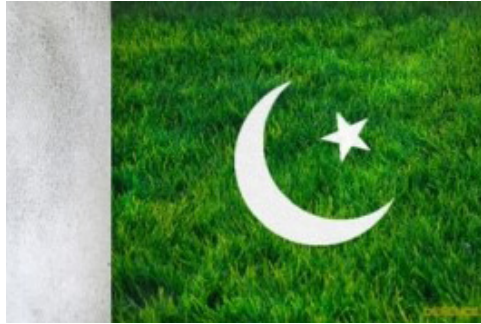
1:15-2:15 Panel Discussion – Questions, Reflections, Resources, Realities of  
Ministry of the Word and Sacrament

2:15-2:20 Blessing and Dismissal

*Sponsored by Mid-Kentucky Presbytery Commission on Preparation for Ministry  
and The Presbyterian Connection of Louisville Presbyterian Theological Seminary*



# JOIN US



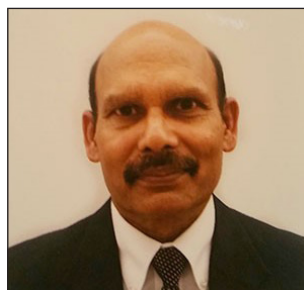
**Encounters with International Peacemakers**  
**Tuesday, September 19, 2017**  
**3 p.m. | Schlegel Hall 123**

This fall Louisville Seminary will be blessed with visits from three global Christian Peacemakers. They have come to the United States to share how a vision of peace that overcomes violence and injustice is being lived out around the world and what this means for American Christians. Come and join this conversation.

Mphatso Nguluwe



Samuel Akhtar



Doug Baker



Our guests will be

- Mphatso Nguluwe, Director of the AIDS Program of Livingstonia Synod (Malawi) and an advocate for life in fullness for children with AIDS.
- Samuel Akhtar, a Pakistani pastor leading a multicultural new church development in Chicago.
- Doug Baker, a Presbyterian pastor and leader in efforts for reconciliation between Protestants and Catholics in Northern Ireland.





**Subject – Notice of September 18, 2017 Stated Presbytery Meeting**

**STATED MEETING OF THE PRESBYTERY OF MID-KENTUCKY**

**Monday, September 18, 2017 – 10:00 AM.**

**Trinity Presbyterian Church**

**10200 Shelbyville Road**

**Louisville KY 40223-2938**

The docket and supporting papers will be sent on Wednesday, September 13.

Click [here](#) for online meeting registration.

Click [here](#) for the May 8, 2017 Stated Meeting Minutes.

Click [here](#) for the July 11, 2017 Called Meeting Minutes.

Please note that the minutes are in PDF format.

If you must have a Word document, let us know.

Please bring these papers with you to the meeting.

For churches, please make sufficient copies and distribute to your elder commissioners.

If you have any trouble downloading these materials or run into other difficulties, please call (502) 565.6757 or the Presbytery Office (502) 896.8159.

Jerry Van Marter - Stated Clerk

Mary Kutter – Office Manager

**SAVE THE DATE: DECEMBER 1st!**

On December 1st, Louisville Presbyterian Theological Seminary will host a celebration of Louisville Seminary Counseling Center's two-decade commitment to quality marriage and family therapy services for the Greater Louisville area. Special events will include training opportunities, a welcome reception, tours of the counseling center facilities, and a celebratory dinner and presentation. The seminary community is invited to participate. Registration information will be provided later this fall at [www.lpts.edu](http://www.lpts.edu).

YOU ARE  
*welcome*  
HERE